



J.K. INDUSTRIAL CORPORATION





Company Profile

J.k.Inds. Corp. a leading name in the Scaffoldings, Cuplock System and Formworks for last decades has been a reckoned name in Indian circles, with recognition of state of the art in design, services and competitive prices exposed it to global markets making us today the growing manufacturer, Supplier and distributor for construction industry.

The company is supported by its own Engineers, Skilled Workers & hi-tech machine shops for designing and testing as per international standards. All our products confirm to the highest international standards and are being constantly researched daily to enhance the performance .The qualified team of engineers constantly monitor the quality of the products ,a group of experienced and enthusiastic marketing professionals have consistently feeded the needs of the overseas buyers with there requirements and attained customer satisfaction in all respects.

Servicing the global sectors for past several years we are now very much familiarized with the international standards & parameters in different geographical markets and have made our corporate philosophy as under.

- to supply quality at the best possible price and achieve total customer satisfaction.
- to monitor the latest development and keep abreast the diversifying markets.

The continuous flow of patronage by the esteemed customers year after year enthalls our motive to excel in making the complete cup lock systems in years to come.



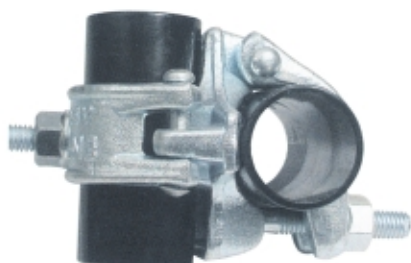
Forged Clamps



JK-001
DOUBLE COUPLER
 (EN-74 / BS-1139)



JK-002
SWIVEL COUPLER
 (EN-74 / BS-1139)



JK-003
DOUBLE COUPLER
 (EN-74 / BS-1139)



JK-004
SWIVEL COUPLER
 (EN-74 / BS-1139)



JK-005
DUAL PURPOSE DOUBLE COUPLER
 (For Pipe OD 42.3 mm / 48.3mm)
 (EN-74 / BS-1139)



JK-006
DUAL PURPOSE SWIVEL COUPLER
 (For Pipe OD 42.3 mm / 48.3mm)
 (EN-74 / BS-1139)

ACCESSORIES



TEE-BOLT



CAP RIVETS



EYE-BOLT



HEX NUT & WASHER



FLANGE NUT

Specifications : Min. Slip Load : 12.5 Kn, Distortion Load : 17Kn

Forged Clamps



JK-007
COMBINATION DOUBLE COUPLER
(For Pipe OD 76.1 mm & 48.3 mm
(EN-74 / BS-1139)



JK-008
COMBINATION SWIVEL COUPLER
(For Pipe OD 76.1 mm & 48.3 mm
(EN-74 / BS-1139)



JK-009
PUTLOG COUPLER
For Pipe OD 48.3 mm
(EN-74 / BS-1139)



JK-010
SLEEVE COUPLER
For Pipe OD 48.3 mm
(EN-74 / BS-1139)



JK-011
FORGED GIRDER COUPLER
For Pipe OD 48.3 mm
(AS - 1576.2)



JK-012
GIRDER CLAMP
For Pipe OD 48.3 mm

ACCESSORIES

Specifications : Min. Slip Load : 12.5 Kn, Distortion Load : 17Kn



HEX-BOLT



FORK-BOLT



SPARE FORGED CAP



SWIVEL COUPLER BODY



DOUBLE COUPLER BODY

Pressed Steel Clamps



JK-013
DOUBLE COUPLER
For Pipe OD 48.3 mm
(EN-74 / BS-1139)



JK-014
SWIVEL COUPLER
For Pipe OD 48.3 mm
(EN-74 / BS-1139)



JK-015
DOUBLE COUPLER
For Pipe OD 48.3 mm
(EN-74 / BS-1139)



JK-016
SWIVEL COUPLER
For Pipe OD 48.3 mm
(EN-74 / BS-1139)



JK-017
DUAL PURPOSE DOUBLE COUPLER
For Pipe OD 48.3 mm & 42.3 mm
(JIS : G3444 / SS : 311)



JK-018
DUAL PURPOSE SWIVEL COUPLER
For Pipe OD 48.3 mm & 42.3 mm
(JIS : G3444 / SS : 311)

ACCESSORIES



TEE-BOLT



CAP RIVETS



EYE-BOLT



HEX NUT & WASHER



FLANGE NUT

Specifications : Min. Slip Load : 12.5 Kn, Distortion Load : 17Kn

Pressed Steel Clamps



JK-019
COMBINATION SWIVEL COUPLER
For Pipe OD 60.3 mm & 48.3 mm
(JIS : G3444 / SS : 311)



JK-020
GIRDER COUPLER
For Pipe OD 48.3 mm
(AS : 1576.2)



JK-021
PUTLOG COUPLER
For Pipe OD 48.3 mm
(EN 74 / BS 1139)



JK-022
PUTLOG HEAD ADAPTER
For Pipe OD 48.3 mm
(EN -74 / BS -1139)



JK-023
SLEEVE COUPLER
For Pipe OD 48.3 mm
(EN -74 / BS -1139)



JK-024
JOINT PIN
For Pipe OD 48.3 mm
(EN -74 / BS -1139)

ACCESSORIES



HEX-BOLT



FORK-BOLT



EYE-BOLT



HEX NUT & WASHER



FLANGE NUT

Specifications : Min. Slip Load : 12.5 Kn, Distortion Load : 17Kn

Pressed Steel Clamps



JK-025
SUPPORT CLAMP / ROOFING COUPLER
For Pipe OD 48.3 mm
(BS -1139)



JK-026
STAIRCASE COUPLER
For Pipe OD 48.3 mm
(BS -1139)



JK-027
TOE BOARD BRACKET
For Pipe OD 48.3 mm
(BS -1139)



JK-028
FENCING COUPLER
For Pipe OD 42.3 mm / 48.3 mm



JK-029
SINGLE WEDGE COUPLER
For Pipe OD 42.3 mm / 48.3 mm



JK-030
SWIVEL WEDGE COUPLER
For Pipe OD 42.3 mm / 48.3 mm

ACCESSORIES



FORK-BOLT



CENTRE RIVET



EYE-BOLT



HEX NUT & WASHER



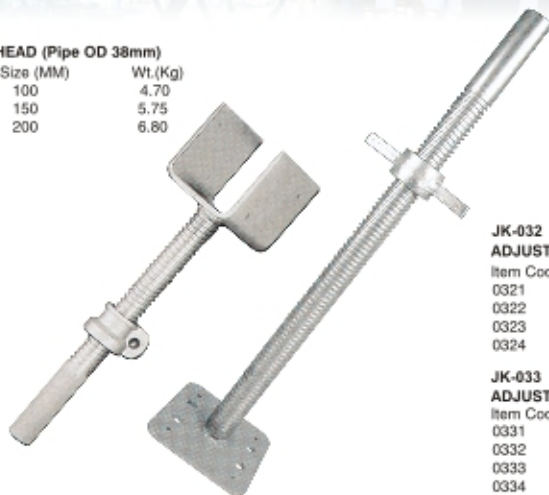
FLANGE NUT

Jacks & Base Plates

JK-031

ADJUSTABLE U - HEAD (Pipe OD 38mm)

Item Code	Size (MM)	Wt.(Kg)
0311	100	4.70
0312	150	5.75
0313	200	6.80



JK-032

ADJUSTABLE BASE JACK (Pipe OD 38mm)

Item Code	TL / AL (Mtr)	Wt. (Kg)
0321	0.450/0.350	2.60
0322	0.550/0.450	2.95
0323	0.650/0.550	3.30
0324	0.750/0.650	3.70

JK-033

ADJUSTABLE BASE JACK (Pipe OD 34mm)

Item Code	TL / AL (Mtr)	Wt. (Kg)
0331	0.450/0.350	2.45
0332	0.550/0.450	2.75
0333	0.650/0.550	3.10
0334	0.750/0.650	3.40

JK-035

UNIVERSAL JACK (Pipe OD 38mm)

Item Code	Ttl. Ht / Adj.Ht.(Mtr.)	Wt.(Kg)
0351	0.450/0.350	1.60
0352	0.550/0.450	1.95
0353	0.650/0.550	2.30
0354	0.750/0.650	2.70

JK-036

UNIVERSAL JACK (Pipe OD 34mm)

Item Code	Ttl. Ht / Adj.Ht.(Mtr.)	Wt.(Kg)
0361	0.450/0.350	1.45
0362	0.550/0.450	1.75
0363	0.650/0.550	2.10
0364	0.750/0.650	2.40



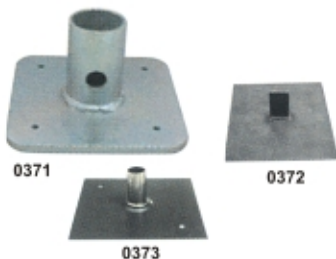
JK-034

ADJUSTABLE BASE JACK (Solid Ø32mm)

Item Code	TL / AL (Mtr)	Wt. (Kg)
0341	0.500/0.400	4.60
0342	0.600/0.500	5.35
0343	0.800/0.700	6.70
0344	1.000/0.800	8.12

Base size 150 x 150 x 6 (mm)

TL - Total Length AL - Adjustable Length



JK-037

BASE PLATES

Item Code	Size	Pipe : Ø	H -
0371	150x150x6 mm	Ø48.3 mm	H - 100 mm
0372	150x150x2.5 mm	Strip : W - 25 mm,	H - 50 mm, T - 4 mm
0373	150x150x2.5 mm	Pipe : Ø22.7 mm,	H - 50 mm

ACCESSORIES



JACK PLATE

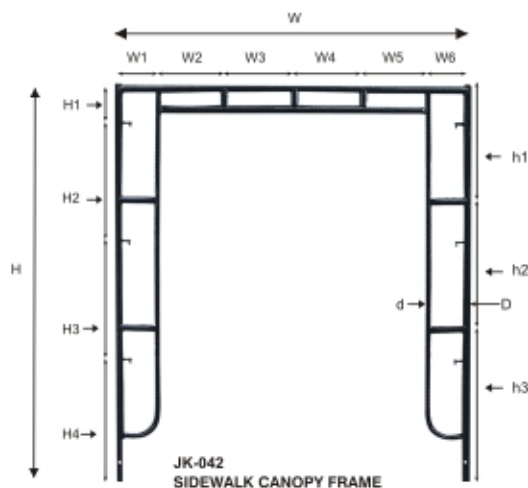
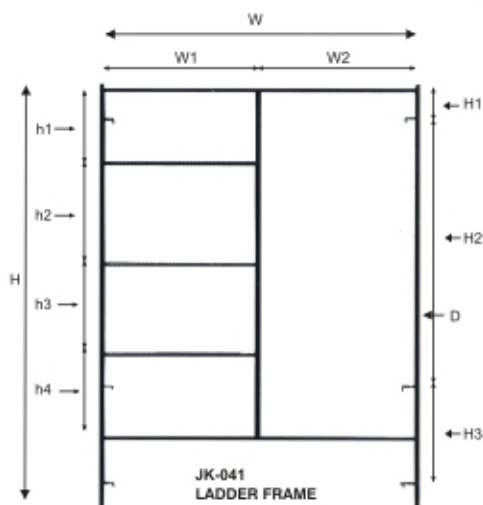
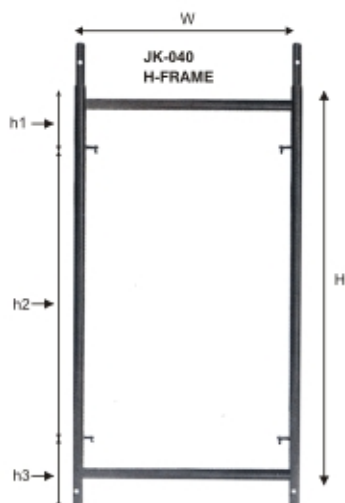
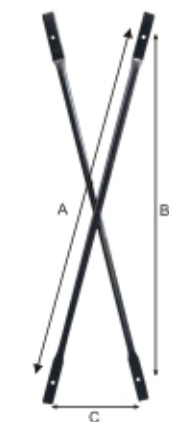
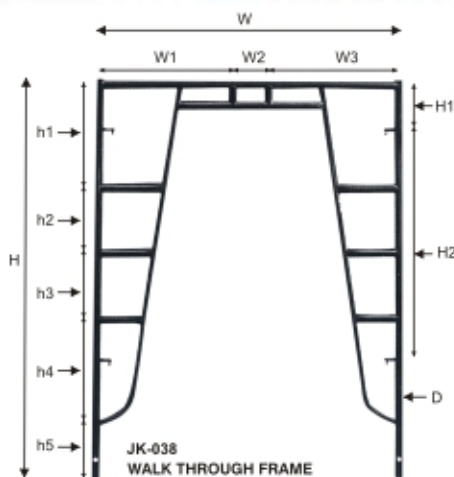


JACK PLATE



JACK NUT

Frame System



ACCESSORIES



Cuplock System

JK-043

VERTICAL / STANDARD

(Open End)

Item Code	Size (Mtr.)	Wt.(Kg)
0431	1.0	5.00
0432	1.3	6.30
0433	1.5	7.90
0434	1.8	9.10
0435	2.0	10.90
0436	2.3	11.60
0437	2.5	13.40
0438	3.0	16.10



JK-044

LEDGER

Item Code	Size (Mtr.)	Wt.(Kg)
0441	0.60	2.60
0442	0.90	3.70
0443	1.00	4.10
0444	1.20	4.80
0445	1.30	5.20
0446	1.60	6.20
0447	1.80	6.90
0448	2.50	9.50

JK-045

INSIDE BOARD TRANSOM

Item Code	Size (Mtr.)	Wt.(Kg)
0451	1.621	7.50

JK-046

INTERMEDIATE TRANSOM

Item Code	Size (Mtr.)	Wt.(Kg)
0461	0.565	2.80
0462	0.795	3.70
0463	1.200	5.20
0464	1.300	5.50
0465	1.800	7.30
0466	2.500	16.50

ACCESSORIES



TOP CUP



BOTTOM CUP



LEDGER BLADE

Props & Column Clamps

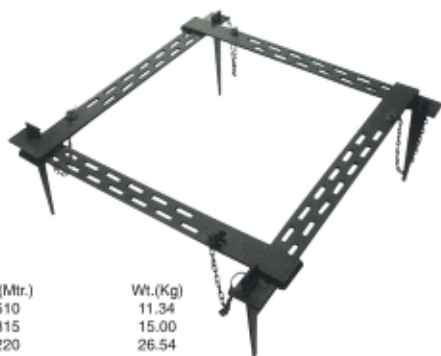


JK-047 LIGHT DUTY PROP

Item Code	Close Ht./Open Ht. (Mtr.)	Wt.(Kg)
0471	0.25 / 0.50	3.30
0472	0.50 / 0.80	4.10
0473	0.70 / 1.30	5.00
0474	1.00 / 1.80	5.90
0475	1.60 / 2.90	9.70
0476	2.00 / 3.60	10.70
0477	2.50 / 4.50	11.70
0478	3.00 / 5.00	13.40

JK-048 HEAVY DUTY PROP

Item Code	Close Ht./Open Ht. (Mtr.)	Wt.(Kg)
0481	1.07 / 1.82	11.00
0482	1.75 / 3.12	16.70
0483	1.98 / 3.35	18.40
0484	2.59 / 3.95	20.20
0485	3.20 / 4.87	24.20



JK-049 COLUMN CLAMP

Item Code	Adjustment (Mtr.)	Wt.(Kg)
0491	0.150 - 0.510	11.34
0492	0.460 - 0.815	15.00
0493	0.610 - 1.220	26.54

ACCESSORIES



PROP NUT



PROP SLEEVE HEAVY DUTY



PROP SLEEVE LIGHT DUTY



LOCKING PINS

Walking Boards



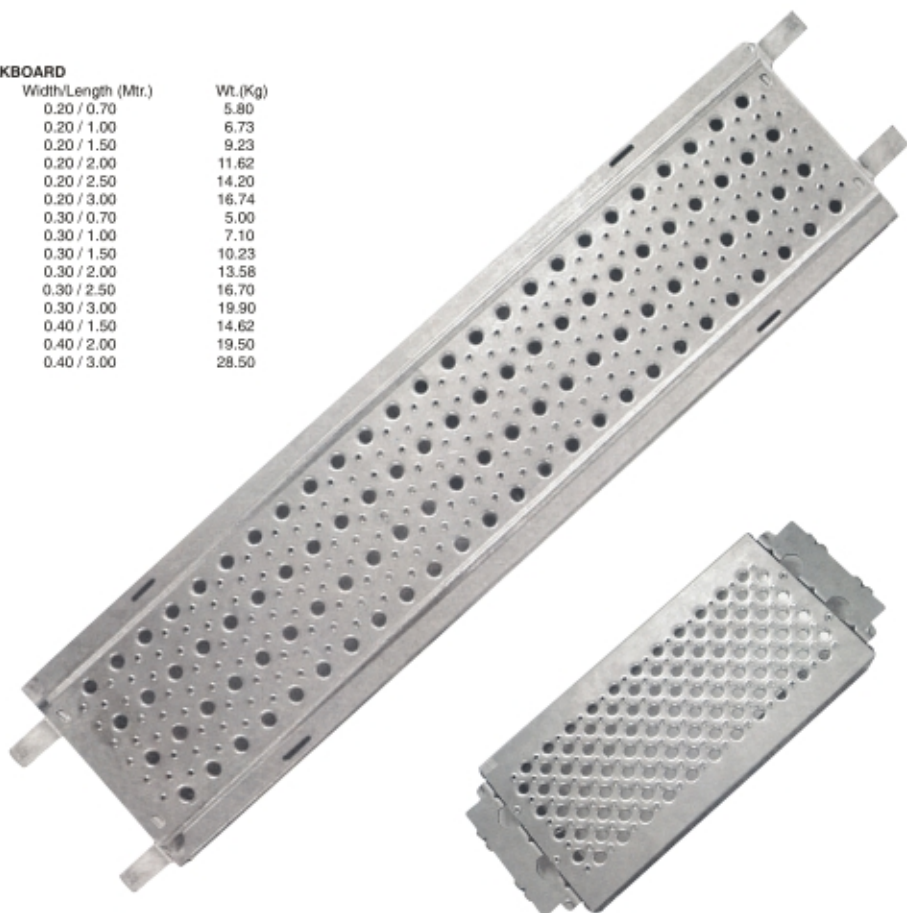
JK-050
WALKING BOARD OUTER BRACKET



JK-051
WALKING BOARD INNER BRACKET

JK-052 **STEEL WALKBOARD**

Item Code	Width/Length (Mtr.)	Wt.(Kg)
0521	0.20 / 0.70	5.80
0522	0.20 / 1.00	6.73
0523	0.20 / 1.50	9.23
0524	0.20 / 2.00	11.62
0525	0.20 / 2.50	14.20
0526	0.20 / 3.00	16.74
0527	0.30 / 0.70	5.00
0528	0.30 / 1.00	7.10
0529	0.30 / 1.50	10.23
05210	0.30 / 2.00	13.58
05211	0.30 / 2.50	16.70
05212	0.30 / 3.00	19.90
05213	0.40 / 1.50	14.62
05214	0.40 / 2.00	19.50
05215	0.40 / 3.00	28.50



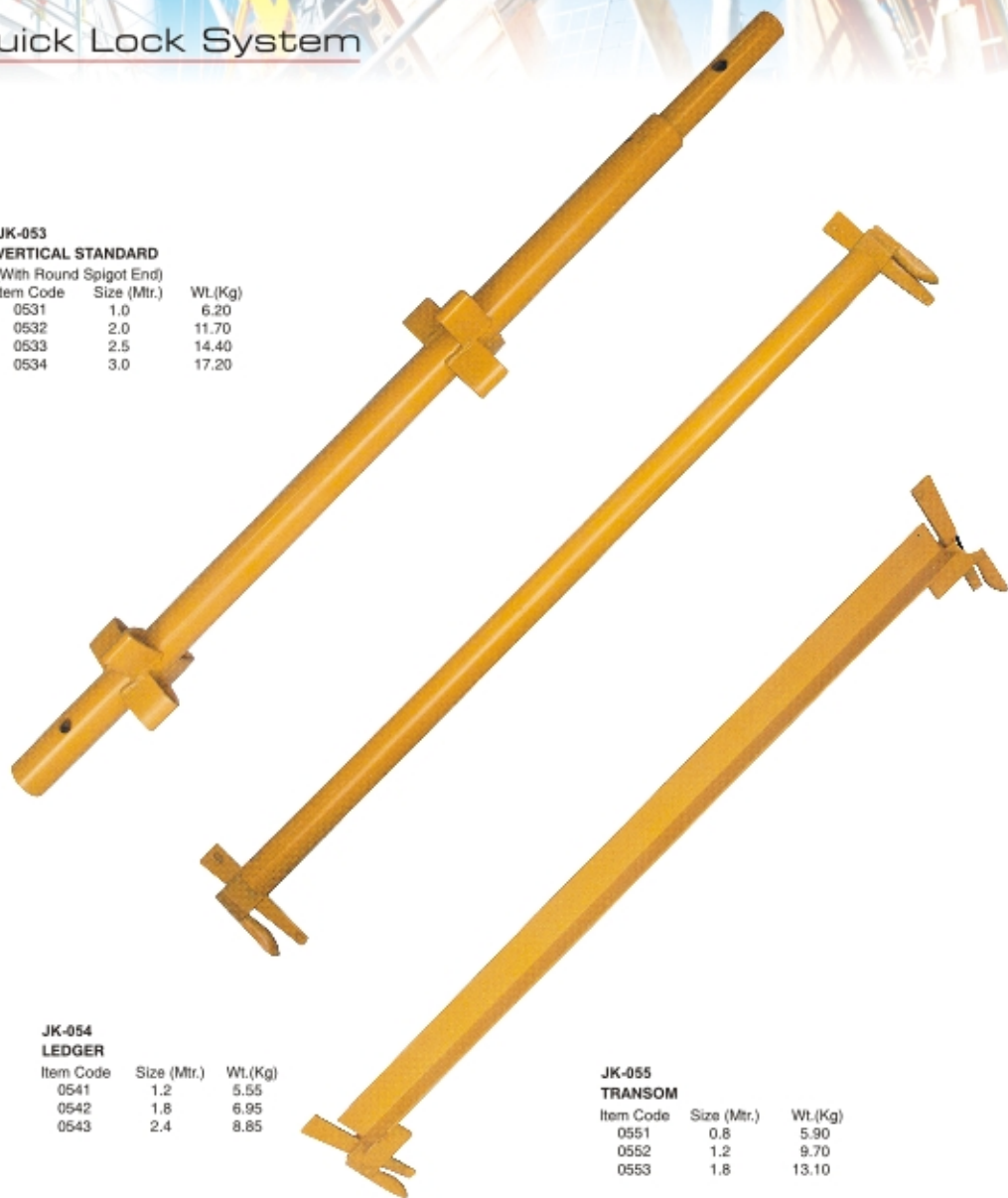
Quick Lock System

JK-053

VERTICAL STANDARD

(With Round Spigot End)

Item Code	Size (Mtr.)	Wt.(Kg)
0531	1.0	6.20
0532	2.0	11.70
0533	2.5	14.40
0534	3.0	17.20



JK-054

LEDGER

Item Code	Size (Mtr.)	Wt.(Kg)
0541	1.2	5.55
0542	1.8	6.95
0543	2.4	8.65

JK-055

TRANSOM

Item Code	Size (Mtr.)	Wt.(Kg)
0551	0.8	5.90
0552	1.2	9.70
0553	1.8	13.10

ACCESSORIES



GUIDING PIN



U - CLIP



V - PRESSINGS



WEDGE



Quick Lock System



3 BOARD



2 BOARD



1 BOARD

JK-056

STAGE BRACKET

Description	Item Code	Size (Mtr.)	Wt.(Kg)
1 Board	0561	0.243	2.34
2 Board	0562	0.510	5.82
3 Board	0563	0.738	9.54

JK-057

FACE BRACE

Item Code	Size (Mtr.)	Wt.(Kg)
0571	2.74	10.90
0572	3.54	13.10

JK-058

TIE BAR

Item Code	Size (Mtr.)	Wt.(Kg)
0581	1.245	3.52
0582	1.803	5.20
0583	2.413	7.00

Form Work Products



JK-059

THREE WING ANCHOR NUT

Material : Malleable Cast Iron
Size : 100 mm
Weight : 0.640 KG



JK-060

TWO WING ANCHOR NUT

Material : Malleable Cast Iron
Size : Ø70 / 100 mm
Weight : 0.400 / 0.590 KG



JK-061

WATER BARRIER

Material : Malleable Cast Iron
Size : 120 mm Length
Weight : 0.500 KG



JK-062

WATER BARRIER WITH DISC

Material : Malleable Cast Iron
Size : 116 mm Length
Weight : 0.540 KG



JK-063

WING NUT

Material : Malleable Cast Iron
Weight : 0.320 KG
Working Load : 90 KN



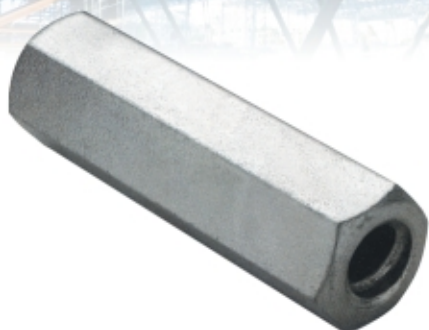
JK-064

FORGED WING NUT

Material : EN-8
Weight : 0.350 KG
Working Load : 90 KN



Form Work Products



JK-065
TIE BAR CONNECTOR

Material : Mild Steel
Size : 100 mm Length
Weight : 0.450 KG



JK-066
COLD ROLLED TIE ROD

Material : EN-8
Size : \varnothing 15 mm, Upto 6 Mtr. Length
Working Load : 90 KN
Weight : 1.47 KG / Mtr.



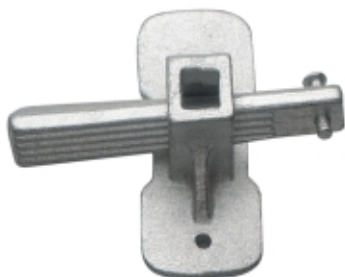
JK-067
HEXAGONAL NUT

Material : Mild Steel
Size : 50 mm Length
Weight : 0.210 KG



JK-068
WALLER PLATE

Material : St 37
Size : 120 x 120 x 6 / 10 mm
Weight : 0.660 / 1.10 KG



JK-069
RAPID CLAMP/WEDGE CLAMP

Material : High Quality Steel
(Casted Body & Forged Wedge)
Size : \varnothing 4 - 10mm
Weight : 0.380 KG



JK-070
STEEL CONE

Material : St 37
Size : 90 mm Length
Weight : 0.600 KG

Special Products



JK-071
READY LOCK TRANSOM



JK-072
ALUMINIUM CLAW



JK-073
ALUMINIUM CLAW



JK-074
ALUMINIUM SPIGOT



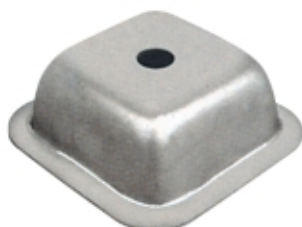
JK-075
TENSION PIN



JK-076
GIRDER CLAMP



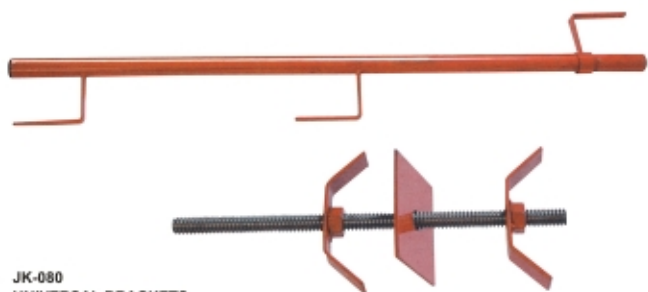
JK-077
PIG TAILS



JK-078
PALLETE BOWL



JK-079
FRAME RING



JK-080
UNIVERSAL BRACKETS



JK-081
STEEL PALLETE



JK-082
SCAFFOLD LEATHER KIT



JK-083
CASTED RING NUT



JK-084
FORGED RING BOLT



JK-085
UNIVERSAL SLEEVE



JK-086
FORGED WEDGE



JK INDUSTRIAL CORPORATION

K-257, Phase-VIII, Focal Point, Ludhiana-141010 Punjab (INDIA)

Ph : +91-161-2674654 Fax : +91-161-5047654, Mobile : +91-98140-75723

E-mail : harinder@jkindscorp.com, precuro@gmail.com